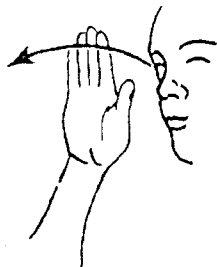


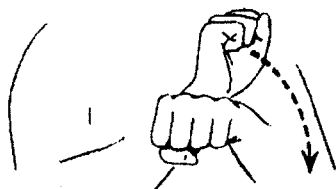
SHALL (shäl, *unstressed* shäl), *v.*, future tense of the verb TO BE. (Something ahead or in the future.) The upright, open right hand, palm facing left, moves straight out and slightly up from a position beside the right temple. *Cf.* FUTURE, IN THE FUTURE, LATER 2, LATER ON, WILL 1, WOULD.



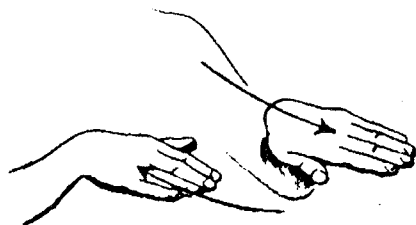
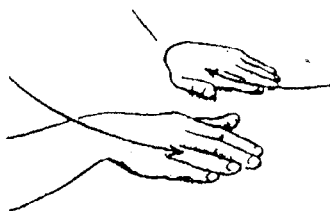
BELIEF (bĭ lĕf'), *n.* (A thought clasped onto.) The index finger touches the middle of the forehead (where the thought lies), and then both hands are clasped together. *Cf.* BELIEVE, CONVICTION.



OVERCOME (ō' vər kŭm'), *v.*, -CAME, -COME, -COMING. (Forcing the head into a bowed position.) The right "S" hand, placed across the left "S" hand, moves over and down a bit. *Cf.* BEAT 2, CONQUER, DEFEAT, SUBDUE.



WALK (wôk), *n., v.*, WALKED, WALKING. (The movement of the feet.) The downturned "S" hands move alternately toward and away from the chest. *Cf.* STEP.

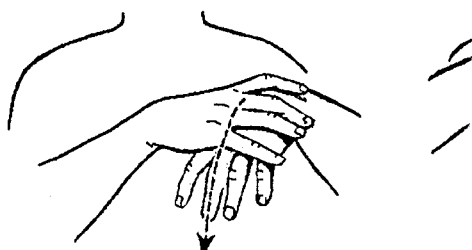


SOME (sŭm; *unstressed* səm), *adj.* (Cutting off or designating a part.) The little finger edge of the open right hand moves straight down the middle of the upturned left palm. *Cf.* PART 1, PIECE, PORTION, SECTION, SHARE 1.

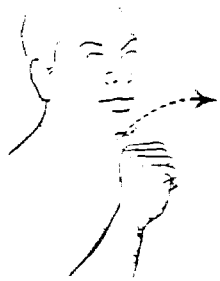


HAND (händ), *n.* (The natural sign.) The prone right hand is drawn over the back of the prone left hand. For the plural, the action is repeated with the hands switched. The little finger edge of the right hand may instead be drawn across the back of the left wrist, as

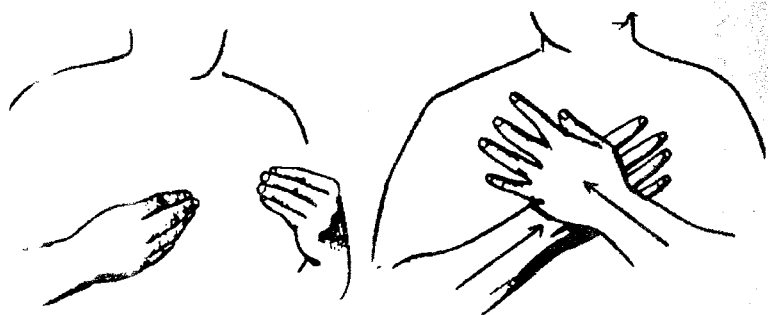
if cutting off the left hand; and action is repeated with the hands



NOT 2, adv. The right "A" hand is placed with the tip of the upturned thumb under the chin. The hand draws out and forward in a slight arc.



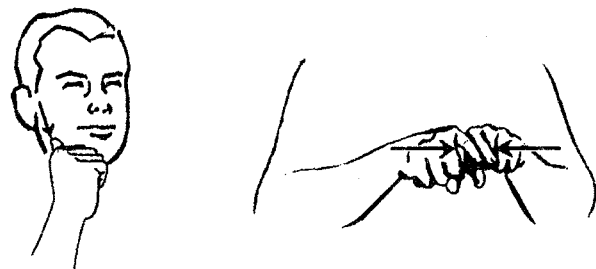
AFRAID (ə frād'), *adj.* (The heart is suddenly covered with fear.) Both hands, fingers together, are placed side by side, palms facing the chest. They quickly open and come together over the heart, one on top of the other. Cf. FEAR 1, FRIGHT, FRIGHTEN, SCARE(D), TERROR 1.



BROTHER (brūth' ər), *n.* (A male who is the same, i.e., from the same family.) The root sign for MALE is made: the thumb and extended fingers of the right hand are brought up to grasp an imaginary cap brim, representing the tipping of caps by men in olden days. Then the sign for SAME 1 is made: the outstretched index fingers are brought together, either once or several times.



SISTER (sīs' tər), *n.* (Female root sign: SAME. Meaning a female from the same family.) The FEMALE root sign is made: the thumb of the right "A" hand moves down along the right jawbone, almost to the chin. This is followed by the sign for SAME: the outstretched index fingers are brought together, either once or several times.



TODAY 1 (tə dā'), *n.* (Now, day.) The sign for NOW is made: the upturned right-angle hands drop down rather sharply. The "Y" hands may also be used. This is followed by the sign for DAY: the left arm, hand horizontal, palm down, represents the horizon. The right elbow rests on the back of the left hand, and the right arm in a perpendicular position. The right "D" hand, palm facing left, moves in an arc to the left until it is just above the left elbow. The two signs may be reversed.



TRUE (trū), *adj.* (Coming forth directly from the lips; true.) The index finger of the right "D" hand, palm facing left, is placed against the lips. It moves up an inch or two and then describes a small arc forward and away from the lips. Cf. ABSOLUTE, ABSOLUTELY, ACTUAL, ACTUALLY, AUTHENTIC, CERTAIN, CERTAINLY, FIDELITY, FRANKLY, GENUINE, INDEED, POSITIVE 1, POSITIVELY, REAL, REALLY, SINCERE 2, SURE, SURELY, TRULY, TRUTH, VALID, VERILY.

