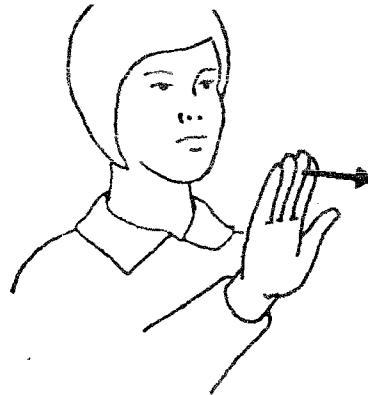


Keep Your Eyes on the Prize



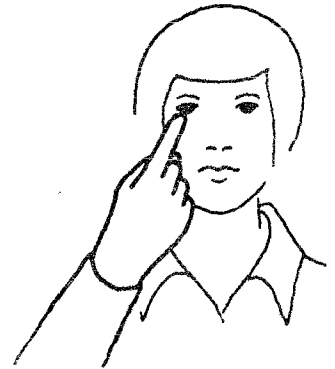
keep

V shape both hands, tips out.
Place right V on left V. (Sometimes made with K handshapes.)



your

Push palm forward toward person being addressed.



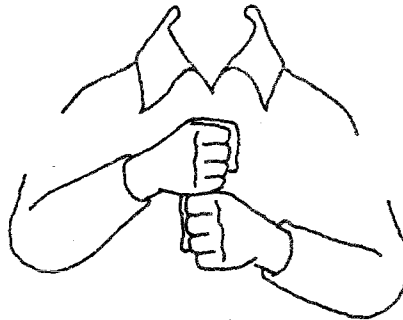
eye

Place tip of index finger on eye.



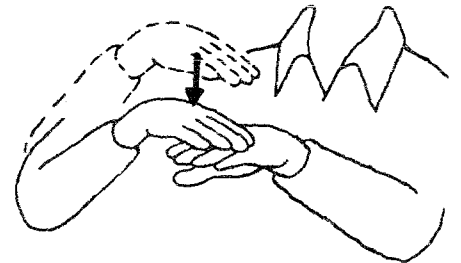
prize

S shape LH knuckles right. Claw shape RH palm left. Swing RH over left S, closing into S shape; then change to A shape and circle in front of right shoulder.



hold

S shape both hands. Place right on top of left as if grasping rope.



on

Open B both hands, palms down, left tips out, right tips left. Place right palm on back of left palm.